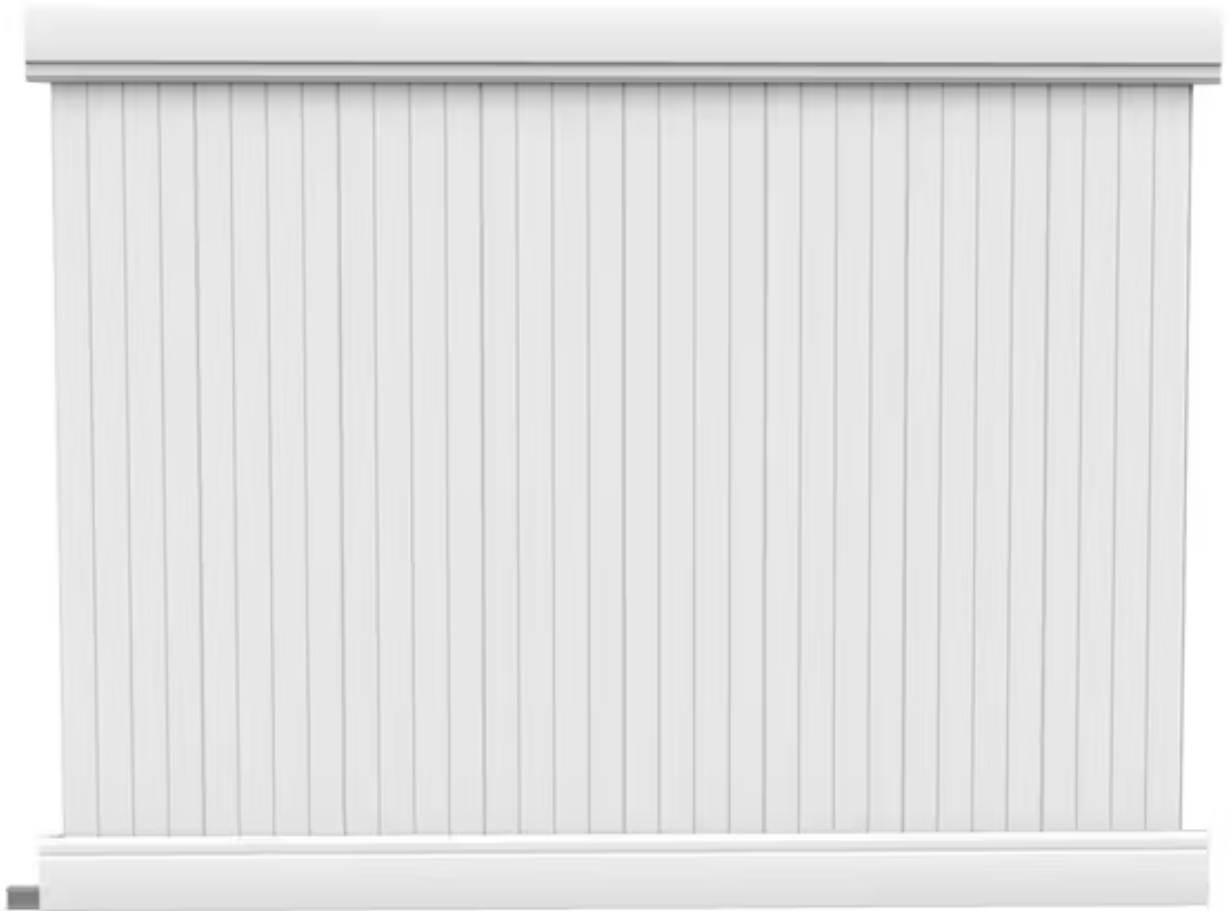


2024 Edition

PVC Privacy Fence

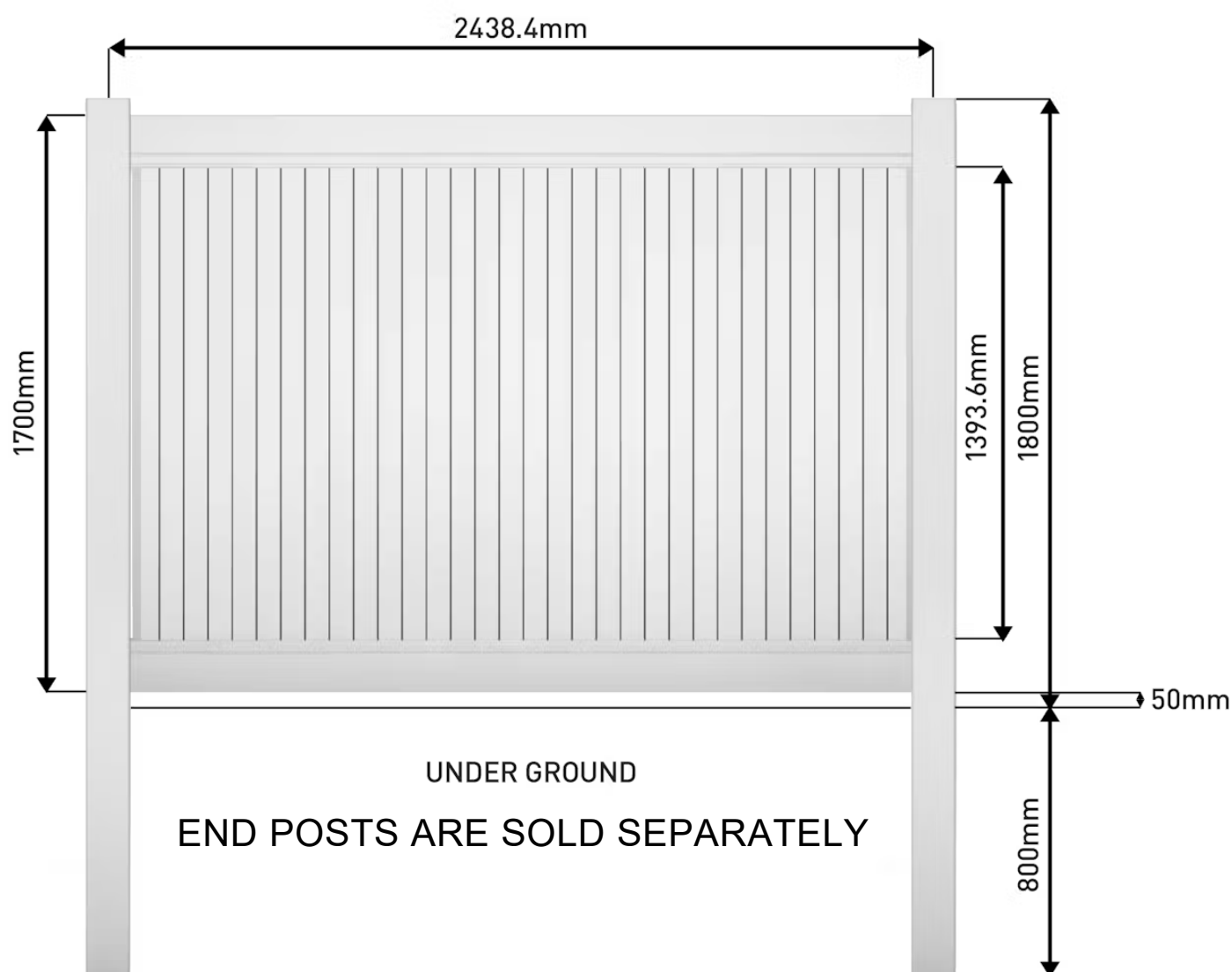
INSTALLATION INSTRUCTIONS



PRIVACY FENCE

PART LIST

- A. 5.08cm x 15.24cm Slotted Rails (2)
- B. 2.2cm x 28.7cm Tongue & Groove Panels (8)
- C. 2.2cm U-Channels (2)
- D. Bottom Rail Alloy Insert (1)



PREPARE FENCE LAYOUT

Please read the instructions completely before starting the installation. Laying out the position of the fence is an important first step to ensure a quality installation.

NOTE: PVC fences are designed for level terrain. For significant slopes, you will need to modify some of the posts and panel parts, see page 6 for installation tips.

STEP 1

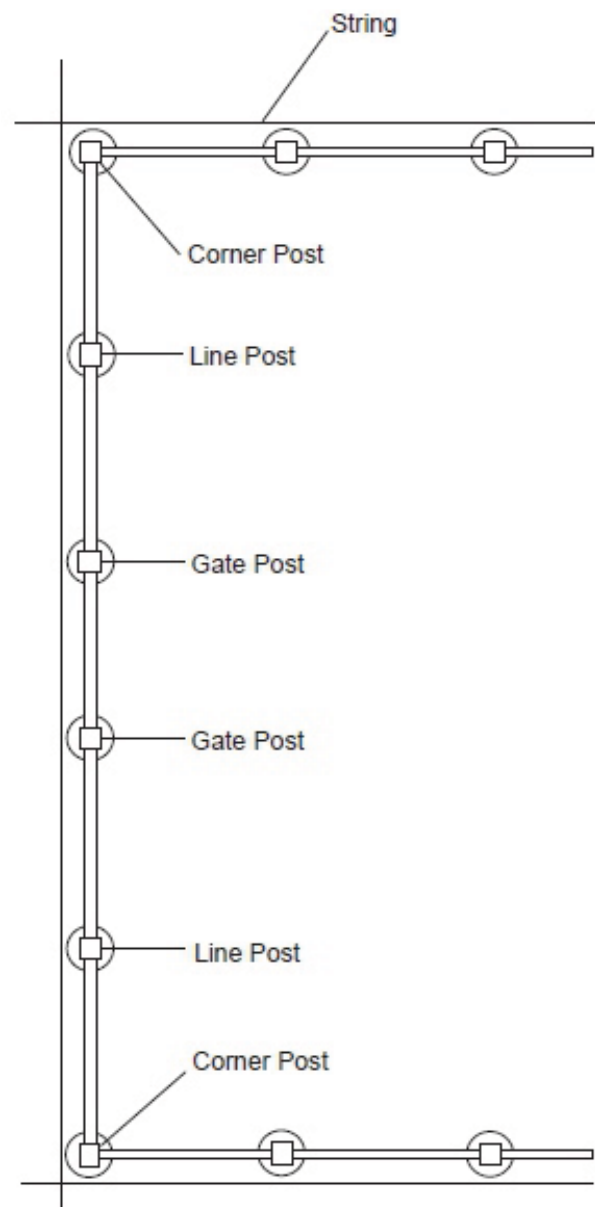
Locate the boundary lines along your property.

STEP 2

Drive stakes into the ground along the property line and attach string between each stake. We recommend that all posts be set approximately 10-15cm inside of the property line to make sure the concrete footings do not go over your property line.

STEP 3

Mark the location of each post hole. A can of bright coloured spray paint or coloured flags work well to mark out the holes.



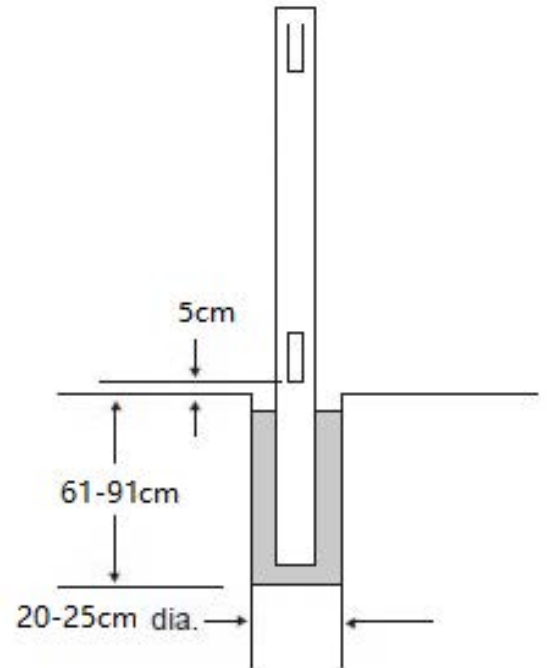
SETTING POSTS

STEP 1

Dig holes 20-25cm in diameter and anywhere from 60cm, 76cm or 91cm deep depending on your local weather and soil conditions.

STEP 2

Position the post in the hole. The post should be centered in the holes and must be square with the fence line so that when the rails are inserted into place they will be parallel with the string line. Check the post on two adjacent sides with a carpenter's level and adjust as necessary to make sure it's plumb. The fence height above ground is also determined at this time. We recommend 5cm to be left from the between the bottom rail and the ground



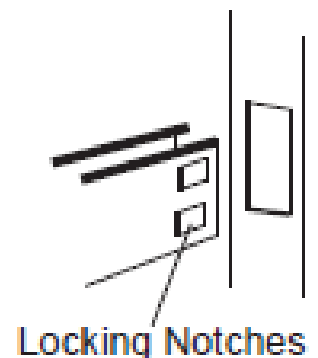
STEP 3

Pour concrete around the posts and fill the holes up to ground level. Wet or dry concrete works fine. If using dry concrete, water down around the posts when you are ready for the concrete to start setting up. The concrete will be set in about 24 hours. Repeat this step until all posts are set and ready for panel assembly and gate installation if required.

PANEL ASSEMBLY - BOTTOM RAIL

STEP 1

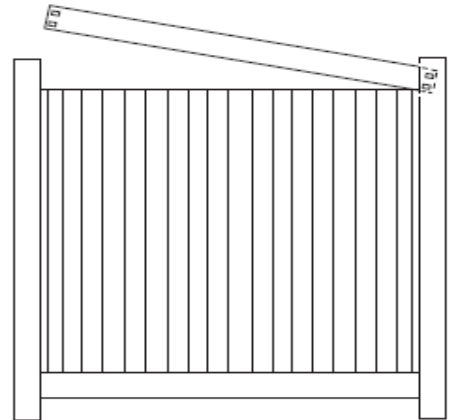
Slide the bottom rails into the cutouts in the posts. The notches on the rails will lock the rail into the post. Repeat this step until all the bottom rails are installed. If the post spacing is less than 244cm on center, cut a piece of the bottom rail to achieve the desired length. Any power saw will work well to cut these rails. You can purchase a notching tool to re-notch the rail or in most cases you can put a screw into the cut rail to hold it in place.



PANEL ASSEMBLY

STEP 1

Starting at one end, insert the first picket into the bottom rail and the u-channel. Proceeding down the panel, insert the pickets into the bottom rails and interlock the tongue and grooves as you go. If the posts are set at less than 244cm on center, you will need to cut down a tongue and groove picket to a smaller width to fit your remaining opening. These can be cut down with a power saw. The cut will be hidden and insert the end into the end u-channel.

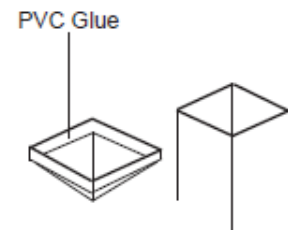


STEP 2

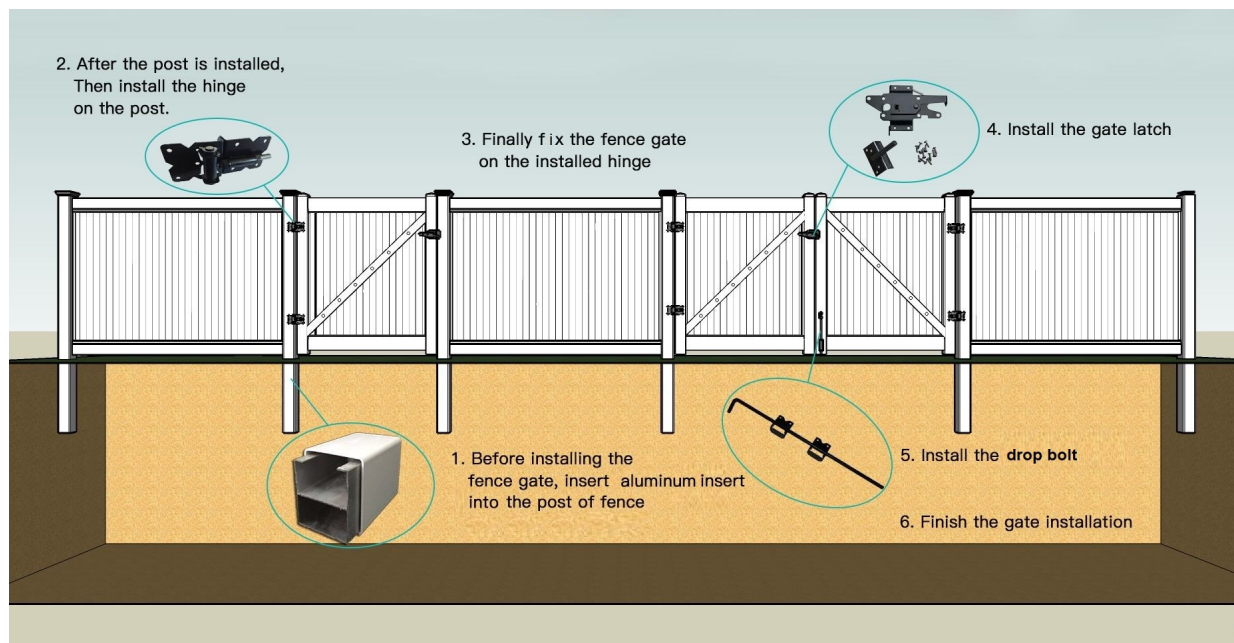
Place one end of the top rail into the posts and work your way down the panel, inserting pickets into the top rail as you go. Once all of the pickets are installed, slide the loose end of the top rail into the post. If post spacing is less than 244cm on center, cut a piece of top rail to achieve desired length. You can purchase a notching tool to re-notch the rails or in most cases you can put a screw into the cut rail to hold the rail in place. Repeat this step until all pickets and top rails have been assembled.

POST CAPS

- Apply PVC glue to the inside of the cap and press onto the top of the post.
- Press firmly to ensure that the cap is on as far as it will go.

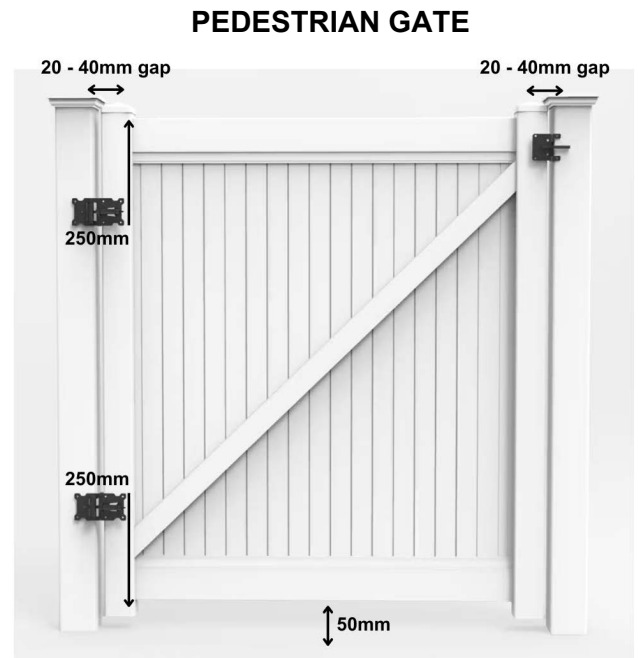


PEDESTRIAN GATE & DRIVEWAY GATE INSTALLATION



PEDESTRIAN GATE & DRIVEWAY GATE INSTALLATION CONTINUED

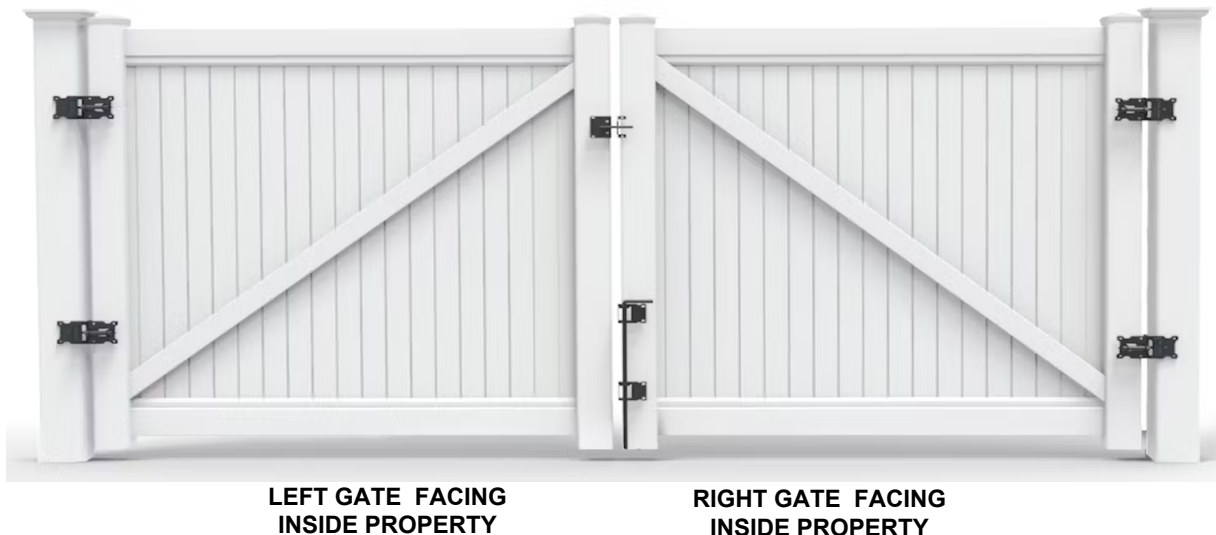
1. Make sure to install the aluminum insert into the post before installing the gate (note that the insert sits 30mm from both ends of the post). Then install the gate post. The gap size between the gate post and fence post should range from 20mm to 40mm.
2. Attach the hinges on the gate post, the hinges need to be drilled into the aluminum insert which is 250mm in length. Therefore position the hinges within 250mm from both the top and bottom of the gate post.
3. Connect the gate panel onto the hinges. Make sure that the top of the gate is on the same horizontal level as the fence. The gate should sit 50mm above the ground.
4. Attach the latch below the top of the gate post.
5. Install the drop bolt if required.



DRIVEWAY GATES CARTON LIST:

- A. [969650] PVC Privacy Fence Driveway Gate Kit 3.6m - Carton 1 Gate Left
- B. [953460] PVC Privacy Fence Driveway Gate Kit 3.6m - Carton 2 Posts & Hardware
- C. [936206] PVC Privacy Fence Driveway Gate Kit 3.6m - Carton 3 Gate Right

DRIVEWAY GATES



Tip: For best installation results on un-even terrain, fill out the routed holes in the post and cut the tongue and groove pickets on the same angle as the slope.

Installation on a slope - Raking Method for Slopes 10° or less

If your property is on a sloped angle (at no more than 10°), you can use the Raking method to install your fence panels. The Raking method is where the horizontal fence panels follow the sloping terrain.

Install the fence to the pre-routed posts so that the top and bottom rails are out of square, but the posts and panels are plumb. To achieve this, you may need to customise the posts and panels:

- Make the post holes bigger to secure the top and bottom rails.
- Make the rail holes bigger in both top and bottom rails to secure the panel boards.
- Shorten the panel board/picket length.

Tip: Always cut from the bottom of the top rail hole and the top of the bottom rail hole to maintain proper fence height. Use a dremel tool to enlarge the holes and only cut out small sections at a time to ensure that the holes are customised correctly.

Installation on a slope - Stepping Method

The other method for installing your fence onto a sloped property is the Stepping method. The Stepping method creates a stairs effect with your fence panels up or down a slope.

Before you begin, plan the layout of the fence panels. You will need to use end posts for each panel.

On the posts, cut the holes on the opposite side to allow for the elevation change. Each hole on the posts may vary so you will need to cut the holes as you install them.

Tip: Use a router trimmer tool with an 8mm guide & 6.35mm drill bit (1 1/4 inch).